



INNOVATIVE SOLUTIONS FOR ROPEWAY TRANSPORTATION //////////////////////////////////



ROPEWAY **Spare parts** CATALOG

A major industrial player, LST wants to set the course for ropeway transportation in the future, realizing innovative solutions, with a modern and sustainable design. LST has already completed more than 700 installations in nearly 30 countries worldwide.

Thanks to its commitment to quality, safety, innovation and respect for the environment, LST aims to offer its customers the best solutions for transporting people in mountainous, touristic or urban areas with comfort and speed.

With ropeway transportation it is possible to make tourist destinations accessible, recreational facilities even more attractive, and solve urban congestion problems.

CERTIFICATION
ISO 9001 (Quality)
ISO 14001 (Environment)
EN 1090 (Welding)



Management
System
ISO 9001:2008
ISO 14001:2004
www.tuv.com
ID 9105043112



*SUPPORT, FLEXIBILITY
AND QUALITY OF SERVICE*



+Over 10% of turnover invested in R&D each year

Over 25 engineers and technicians in R&D

over 700 ropeways installed

30 years of experience

Many patents registered every year

This membership in the Group has enabled us to quickly find our place among the international market leaders of cable transport.



DISTRIBUTION SUBSIDIARIES: *Austria, China, Italy, Spain, Sweden, Switzerland, Turkey and USA.*

A NETWORK OF DISTRIBUTORS worldwide; located on our website.



SERVICES

SERVICES

Support for the operation and maintenance of your equipment



PRE-PROGRAMMED CMMS*, SIMPLIFIED OPERATION

OUR CMMS* SOFTWARE WILL ALLOW YOU TO ACCURATELY MANAGE THE LIFE OF YOUR EQUIPMENT.

- Planning of operations and maintenance tasks
- Rigorous monitoring of costs during all the stages of life of the appliance
- Provision of maintenance documents
 - Procedures
 - Notices
- Management of technician qualifications



* Computer Assisted Maintenance Management

SPARE PARTS CATALOG FOR SIMPLE MAINTENANCE

The after-sales service offers all the spare parts for wear and safety that are useful for your maintenance phases.

- High stock of components
 - For emergencies
 - For routine maintenance
- Shipping within 24 hours for stored components
- Catalog available on www.lst.eu
 - Conveyors
 - Ropeways
 - Surgace lifts



TRAINING FOR YOUR EMPLOYEES

The LST training center welcomes you to our facilities in Sainte-Hélène-du-Lac for training courses adapted to the maintenance of your installations.

- Qualifying training courses
- Approved training center
- Improved maintenance



A WIND OF MODERNITY ON YOUR DOMAINS

LST offers you all its know-how to consolidate and retrofit your devices.

- Improved security level through the SEGATE product, our restraining bar closing detection.
- Optimization of operating conditions thanks to our canopy adaptable on all conveyors.

Our retrofits will extend the life of your devices.

FIXED GRIP CHAIRLIFT

Compact, Easy to operate, Maintainability



4-SEATER COMPACT STATION

4-seater fixed-grip chairlift with compact design, pre-assembled and factory-tested to reduce on-site assembly times, maintenance and environmental impact.

Technical specifications

Transport capacity
Maximum speed without loading carpet
Maximum speed with loading carpet
Line gauge
Drive station tension
Return station tension

Quad

up to 2400 p/h
up to 2.3 m/s
up to 2.6 m/s
4.8 m
up to 60 t
up to 60 t

Key features

FEATURES

- Pre-assembled stations at the factory in three parts →
- Hydraulic, electrical and mechanical components accessible from the ground →
- Hydraulic tensioning and braking units at the front of the station in a closed room →
- Hydraulic unit with manual back-up pump (tension and brake) →
- Emergency drive directly coupled to the bullwheel →
- Vehicles guided through the terminal →
- Carefully designed gear-motor housing →

ADVANTAGES

- Simplified assembly on-site
- Easier maintenance for the operator without requiring work at height
- Accessible for operation and maintenance
- Used to evacuate the lift in the event of hydraulic system failure
- Used to evacuate the line in the event of a gearbox and/or motor malfunction
- Improved passenger comfort
- Low noise level around the station and protection from adverse weather

A SEAT DESIGNED TO REDUCE THE WIND RESISTANCE



SIEGE WIND

SHEAVE TRAINS

Wide range of sheave trains to cover all line profiles. Assembly system allowing adjustments in all directions.



Support sheave load	up to 7.5 kN
Compression sheave load	up to 7 kN
Sheave diameter	400 mm
Number of sheaves – S or C type	2 to 12
Number of sheaves - type 4SC	4S/4C
Sheave type	Aluminium body and steel disc
Sheave bearings	Permanently lubricated bearings

SEGATE

- Electronic guardrail position monitoring system (optional).



SAFETY SYSTEM FOR CHILDREN FALL PROTECTION



CONVEYOR

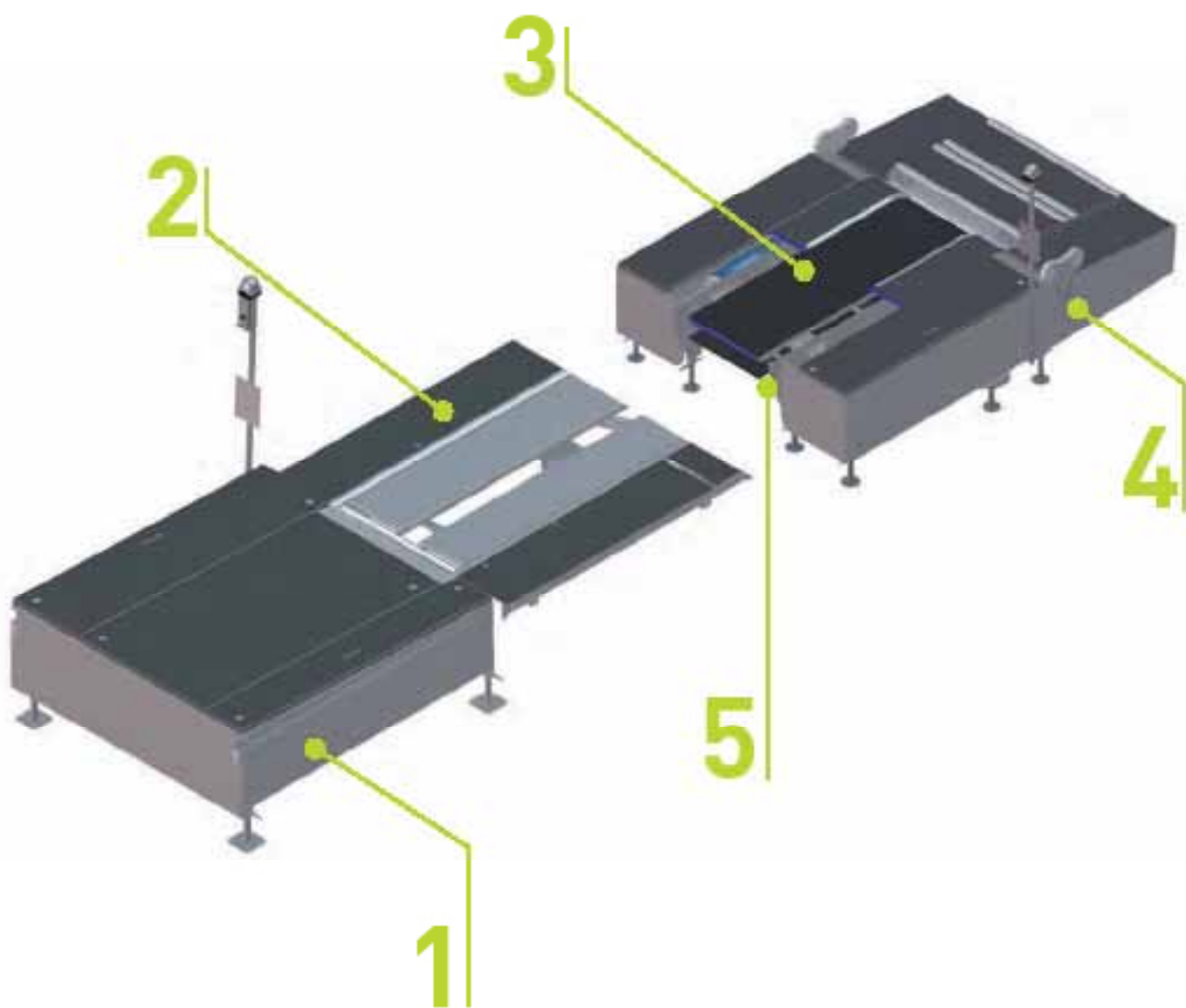


TABLE OF CONTENTS

1 VEHICLE

2 seat vehicle: Rope grip FK1	3
2 seat vehicle: Hanger rod	4
2 seat vehicle : 2 seater chair	5
4 seat vehicle: Rope grip FK2B	7
4 seat vehicle: Hanger rod	8
4 seat vehicle: 4 seater chair ECO	9
4 seat vehicle: 4 seater chair COMFORT	10
4 seat vehicle: 4 seater chair WIND	11

2 LINE

Wheel	13
Sheave assembly	14

3 SENSOR

Drive station	15-17
Return station	18

4 TOOL

Tool	19
------------	----

5 LOADING BELT

4 seater loading gate	21
4 seater loading belt	22-23

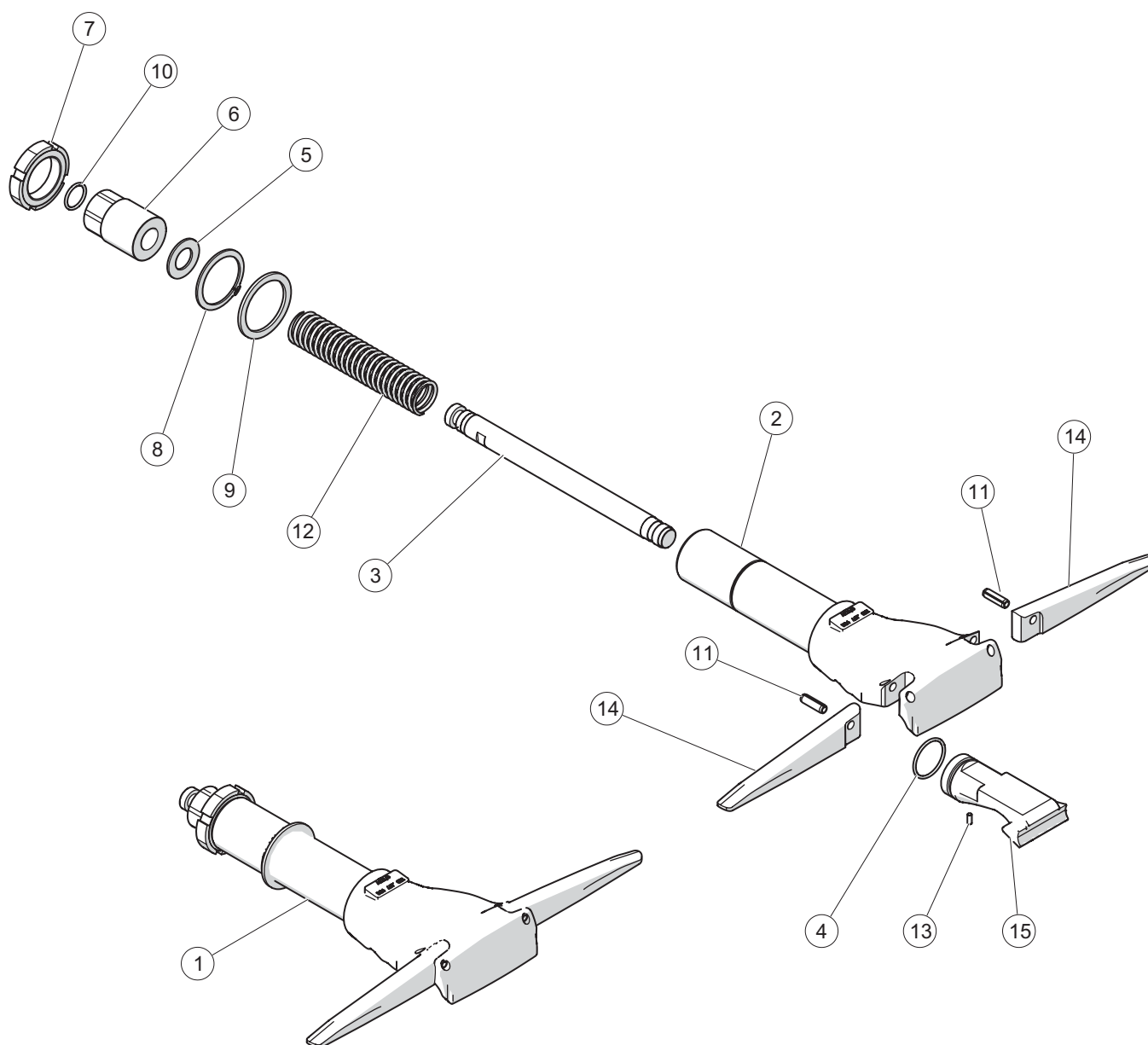
1 VEHICULE

2 seat vehicle



1 VEHICLE

2 seat vehicle: Rope grip FK1



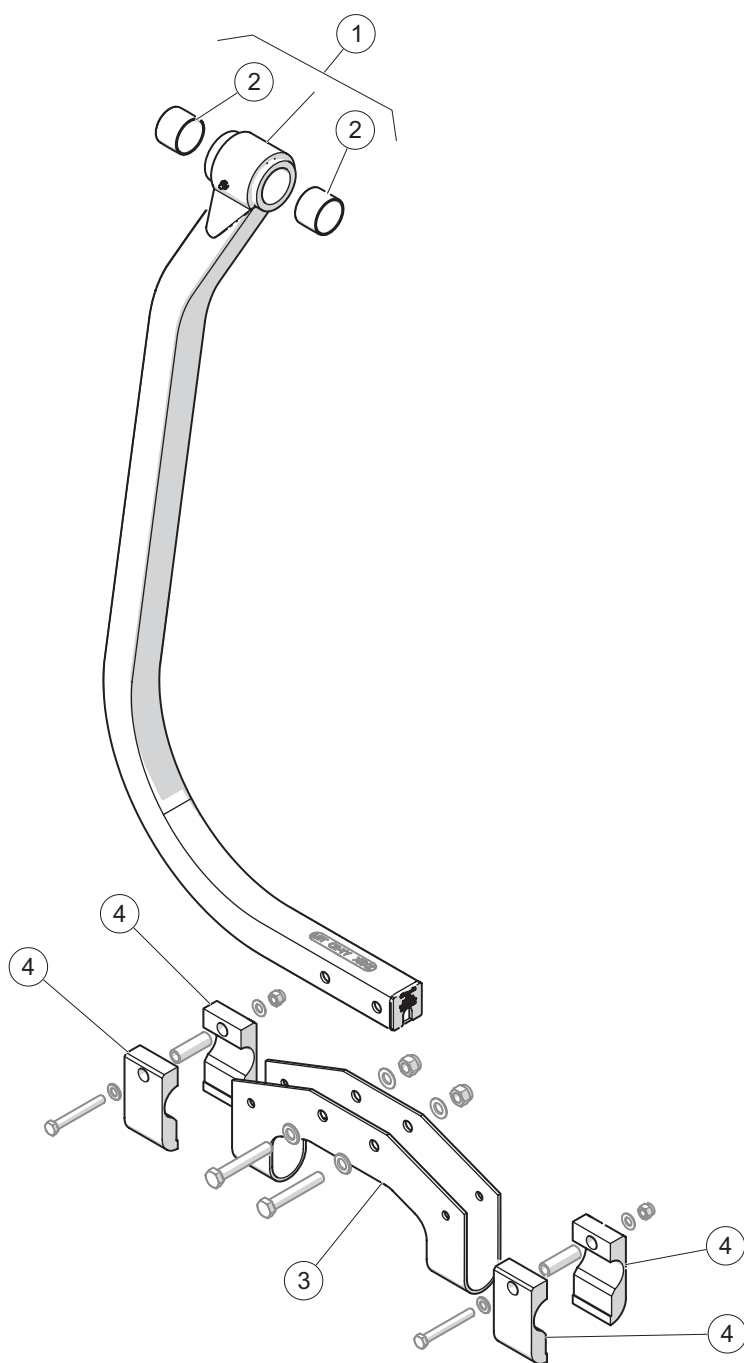
Marker	Cat. no	Designation	Quantity
①	LST-005348	Rope grip FK1*	1
②	LST-005349	Clamping body*	1
③	LST-000635	Axle	1
④	LST-000638	O-ring	1
⑤	LST-000639	Washer	1
⑥	LST-000640	Special nut	1
⑦	LST-000648	Nut	1
⑧	LST-000644	Circlip	1

Marker	Cat. no	Designation	Quantity
⑨	LST-000645	Washer	1
⑩	LST-000641	O-ring	1
⑪	LST-000646	Pin	1
⑫	LST-000643	Spring	1
⑬	LST-000647	Screw	1
⑭	LST-019062	Needle*	
⑮	LST-005350	Pressure pad*	1

* Specify rope diameter.

1 VEHICULE

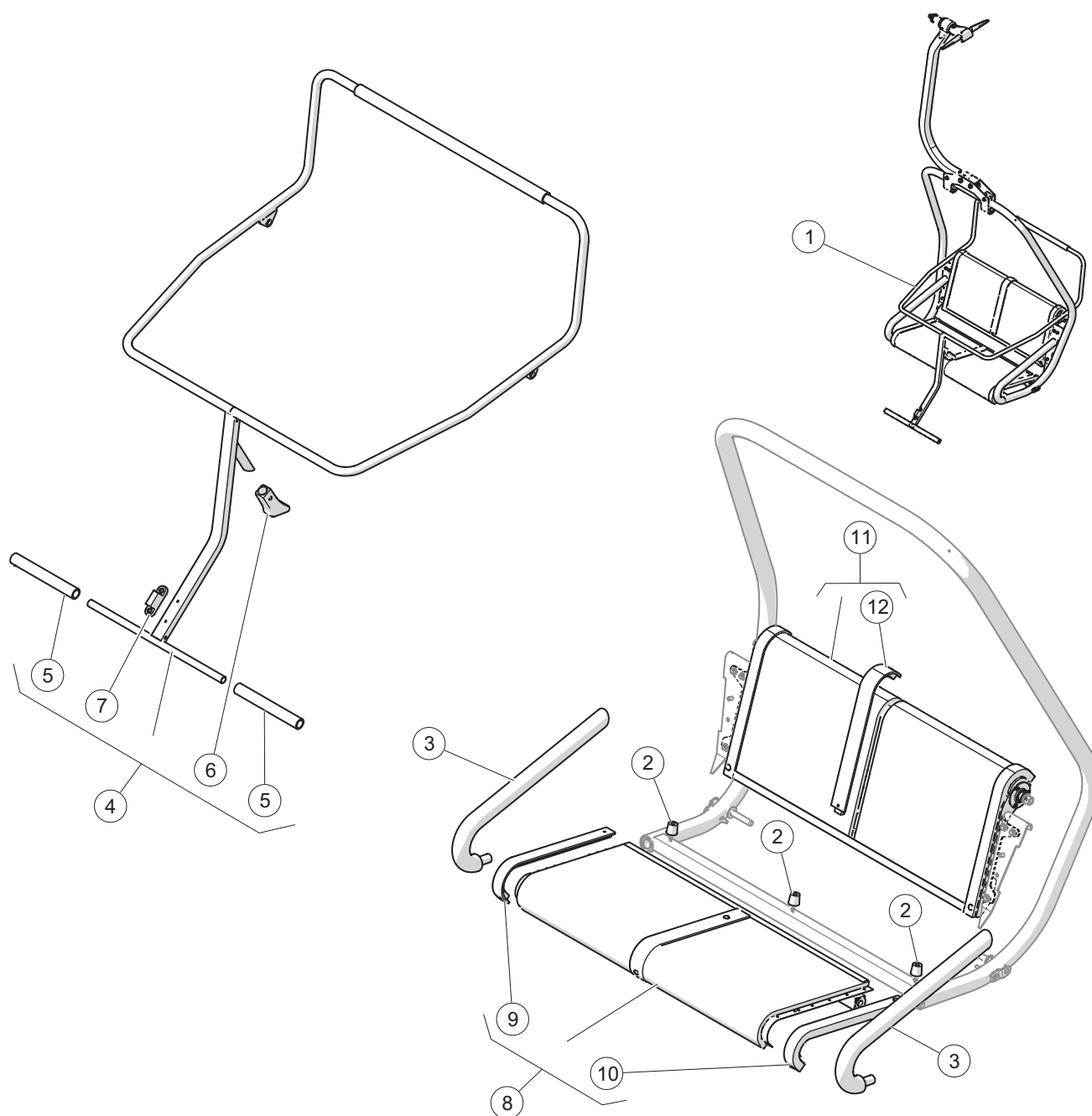
2 seat vehicle: Hanger rod



Marker	Cat. no	Designation	Quantity
①	LST-004353	Hanger rod	1
②	LST-000111	Bearing bushing	2
③	LST-000113	Hanger rod fixation	1
④	LST-000114	Damping rubber	4

1 VEHICULE

2 seat vehicle : 2 seater chair



Marker	Cat. no	Designation	Quantity
①	LST-058427	2 seater chair	1
②	LST-000068	Stopper	1
③	LST-006300	Arm rest	1
④	LST-004348	Safety bar	1
⑤	LST-000061	Protection	1
⑥	LST-000064	Stopper	1

Marker	Cat. no	Designation	Quantity
⑦	LST-000065	Stopper	1
⑧	LST-004350	Seat	1
⑨	LST-005746	Terminal block left	1
⑩	LST-005737	Terminal block right	1
⑪	LST-058434	Backrest	1
⑫	LST-005735	Terminal block middle	1

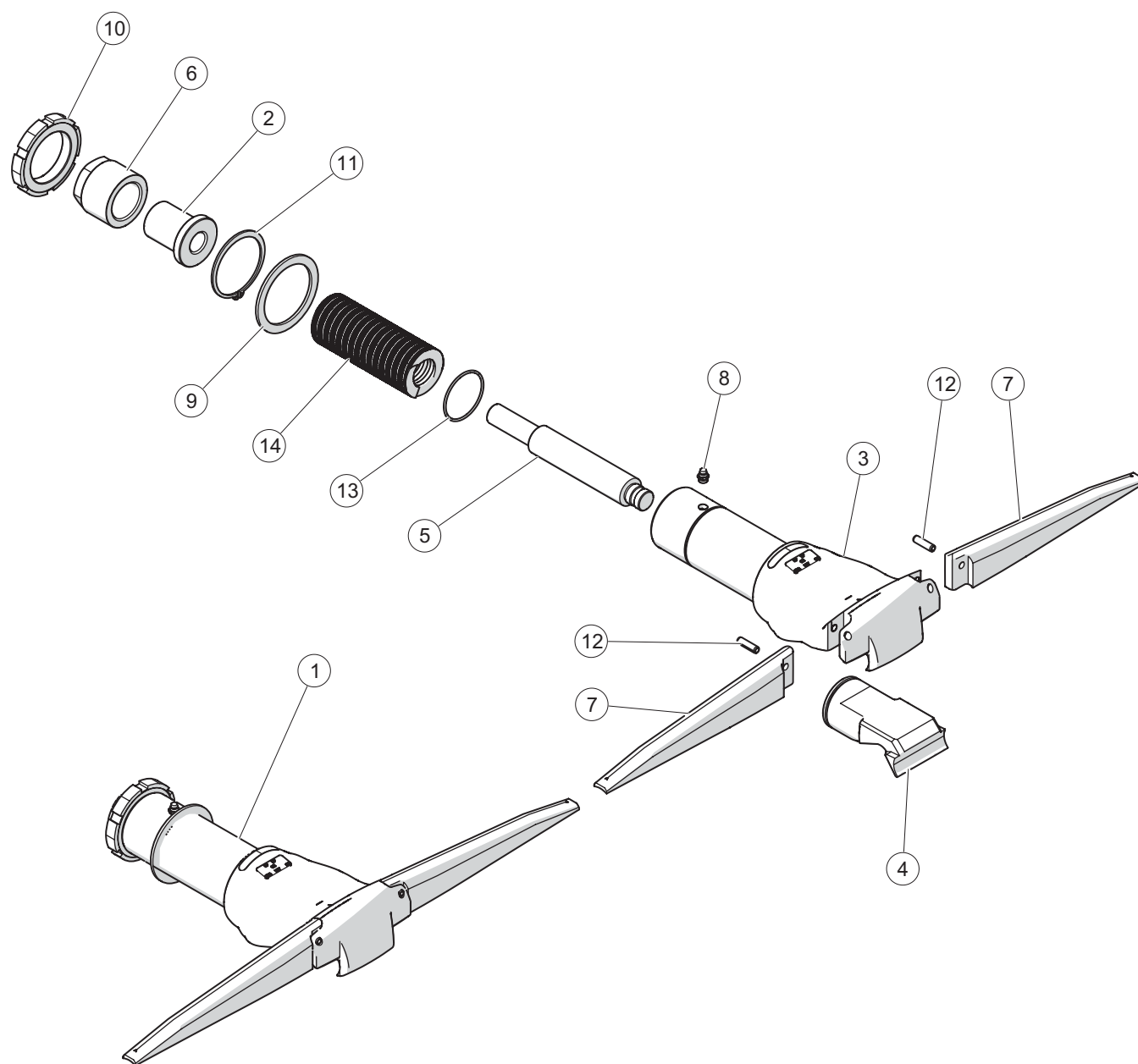
1 VEHICULE

4 seat vehicle



1 VEHICLE

4 seat vehicle: Rope grip FK2B



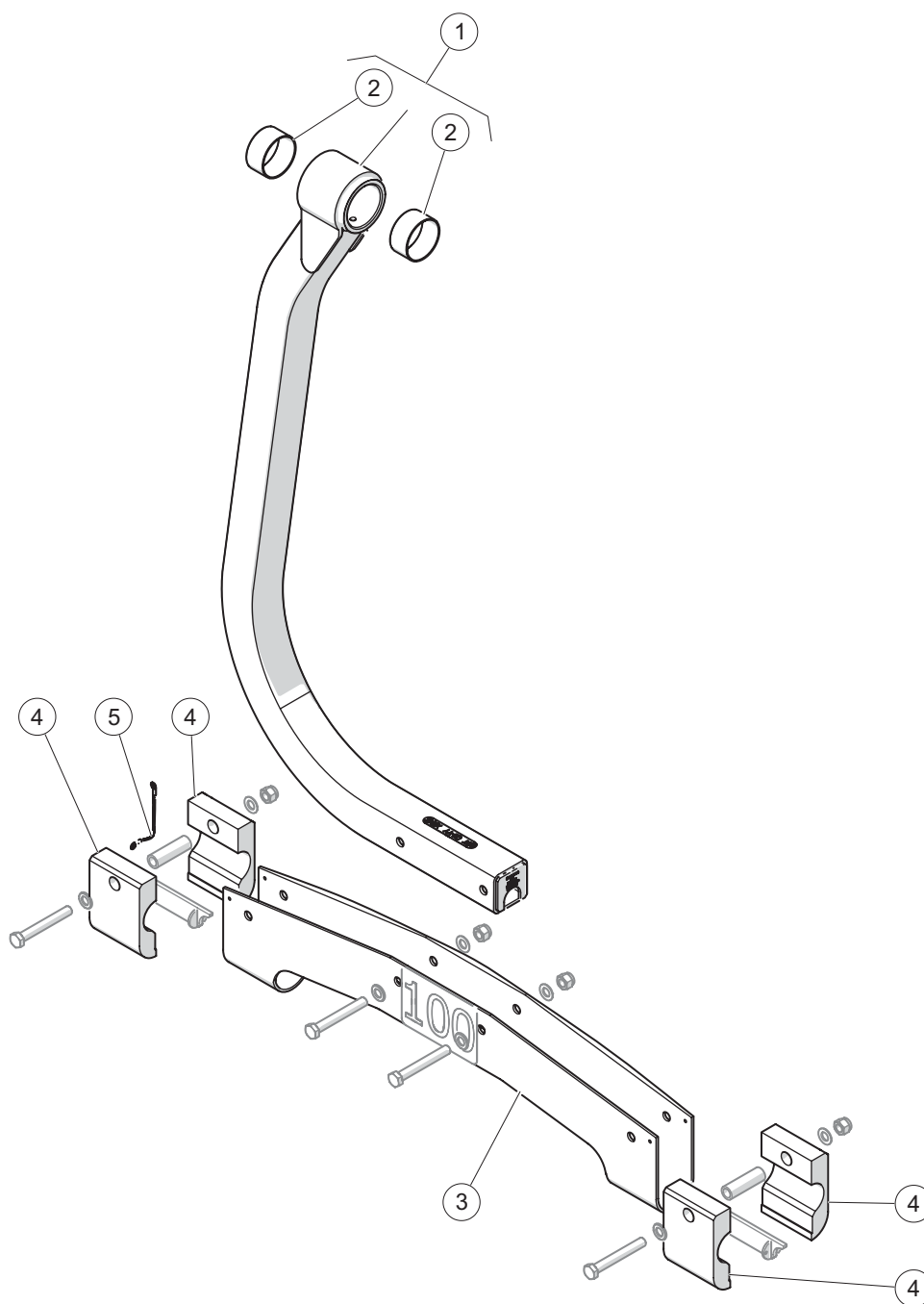
Marker	Cat. no	Designation	Quantity
①-00	202054	Grip for rope Ø38 mm*	1
①-01	202056	Grip for rope Ø42 mm*	1
②	201888	Distance washer	1
③-00	202060	Clamping body for rope Ø38 mm*	1
③-02	202064	Clamping body for rope Ø42 mm*	1
④-00	202061	Pressure pad for rope Ø38 mm*	1
④-01	202065	Pressure pad for rope Ø42 mm*	1
⑤	202068	Axle	1
⑥	202069	Nut	1

Marker	Cat. no	Designation	Quantity
⑦-00	211136	Needle for rope Ø38 mm*	1
⑦-01	204809	Needle for rope Ø42 mm*	1
⑧	222971	Greaser	1
⑨	222974	Washer	1
⑩	223034	Nut	1
⑪	221597	Circlip	1
⑫	221777	Pin	1
⑬	LST-022791	O-ring seal	1
⑭	LST-028820	Spring	1

*Other diameter on demand: Ø36 to 45mm

1 VEHICULE

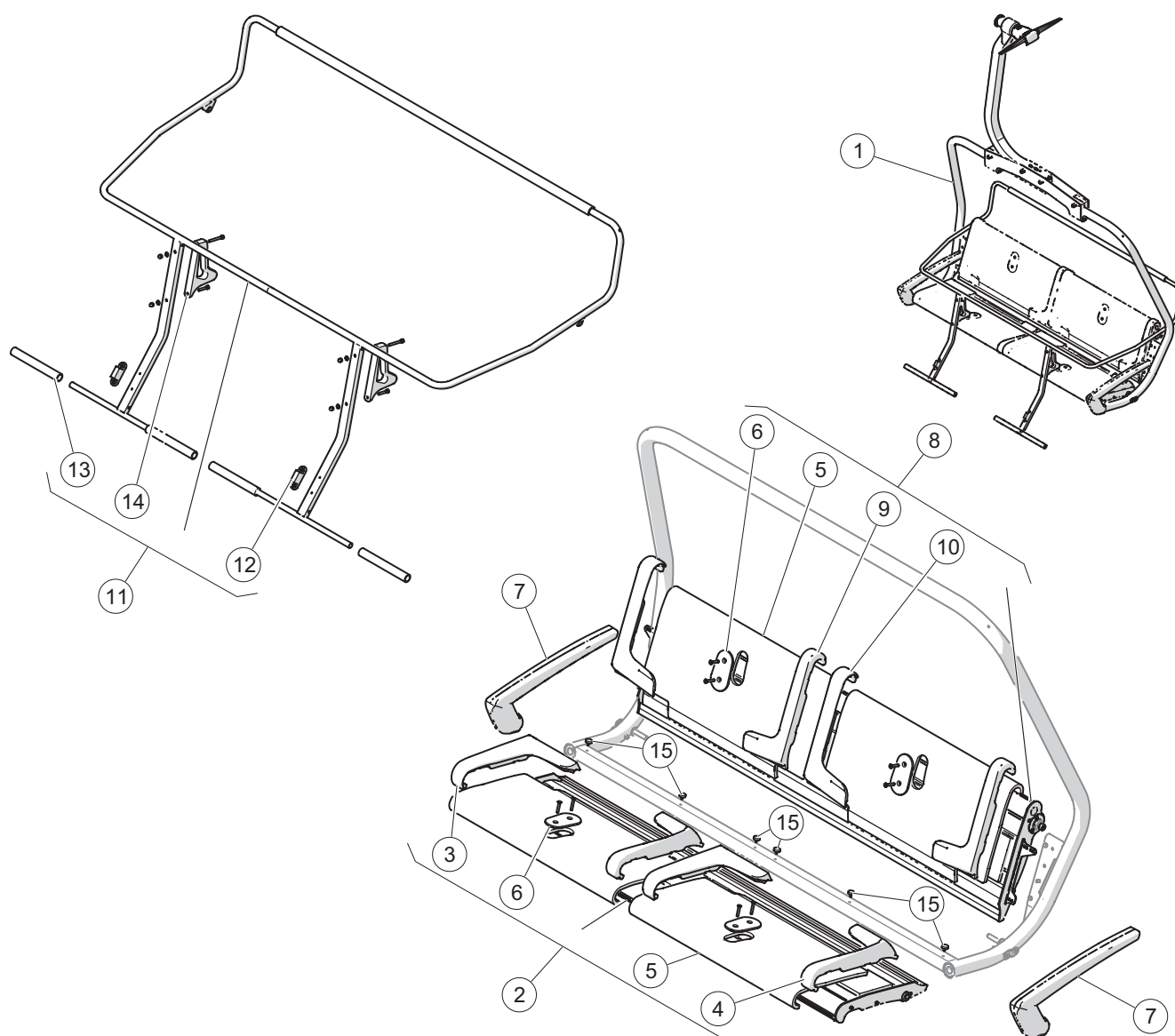
4 seat vehicle: Hanger rod



Marker	Cat. no	Designation	Quantity
①	LST-011156	Hanger rod	1
②	LST-011157	Bearing bushing	2
③	LST-000257	Hanger rod fixation	1
④	LST-000259	Damping rubber	4
⑤	LST-038462	Ground braided	1

1 VEHICULE

4 seat vehicle: 4 seater chair ECO

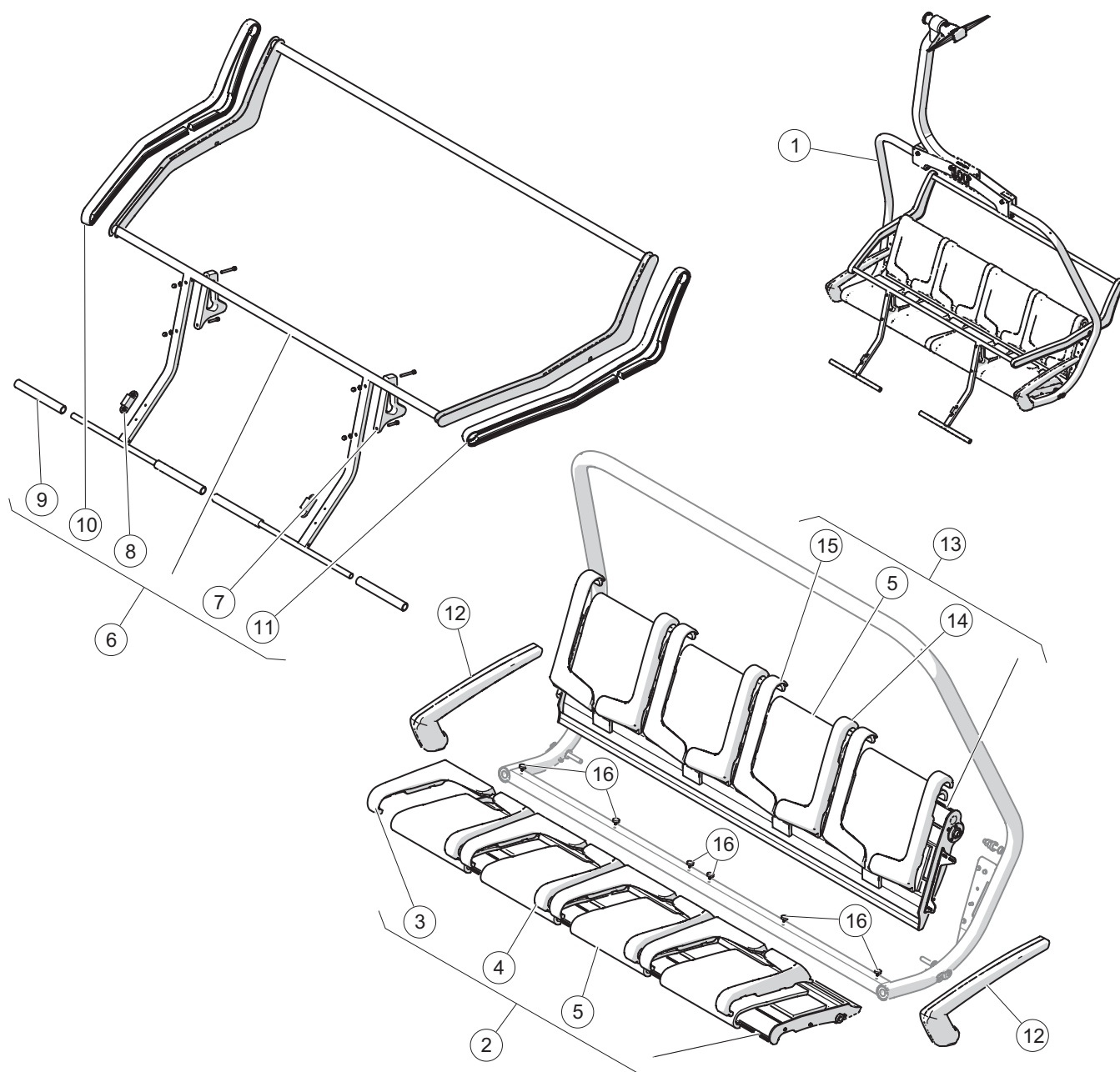


Marker	Cat. no	Designation	Quantity
①	LST-051999	4 seater chair ECO	1
②	LST-038313	Seat	1
③	LST-034354	Foam fixation (right)	2
④	LST-034357	Foam fixation (left)	2
⑤	LST-038293	Foam	4
⑥	LST-038297	Divider	4
⑦	LST-033118	Arm rest	2
⑧	LST-037282	Backrest	1

Marker	Cat. no	Designation	Quantity
⑨	LST-051132	Foam fixation (left)	2
⑩	LST-051129	Foam fixation (right)	2
⑪	LST-038315	Safety bar	1
⑫	LST-000065	Stopper	2
⑬	LST-000061	Protection	4
⑭	LST-033147	Stopper	2
⑮	LST-004936	Stopper	6

1 VEHICULE

4 seat vehicle: 4 seater chair COMFORT

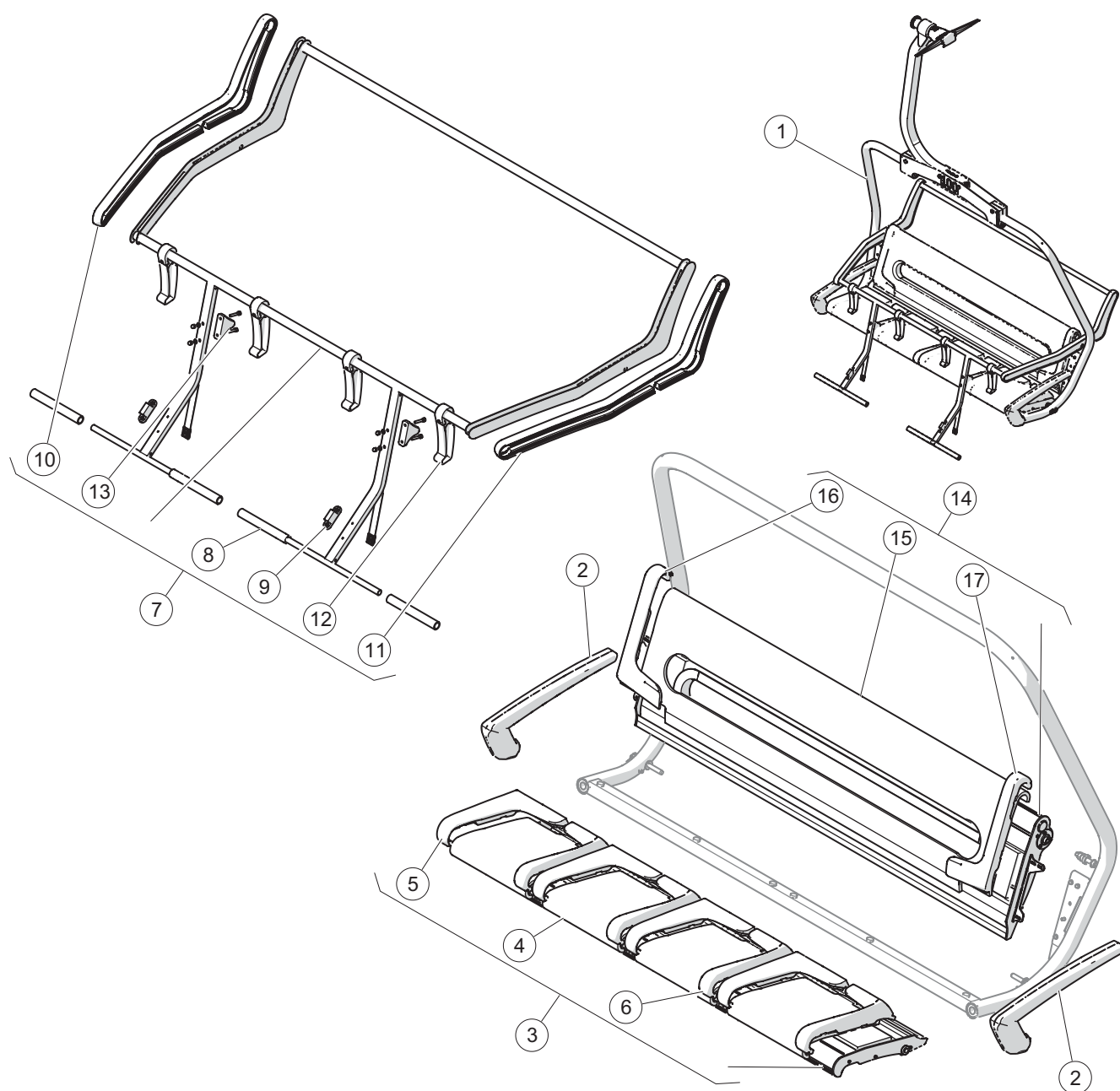


Marker	Cat. no	Designation	Quantity
1	LST-034461	4 seater chair comfort	1
2	LST-034155	Complet seat	1
3	LST-034354	Foam fixation (right)	4
4	LST-034357	Foam fixation (left)	4
5	LST-034217	Foam	8
6-00	LST-034267	Safety bar	1
6-01	LST-036123	Safety bar with child protection	1
7	LST-033147	Stopper	2
8	LST-000065	Stopper	2

Marker	Cat. no	Designation	Quantity
9	LST-000061	Protection	4
10	LST-034378	Side part	1
11	LST-034399	Side part	1
12	LST-033118	Arm rest	2
13	LST-038421	Backrest	1
14	LST-038410	Left fixation	4
15	LST-038409	Right fixation	4
16	LST-004936	Stopper	6

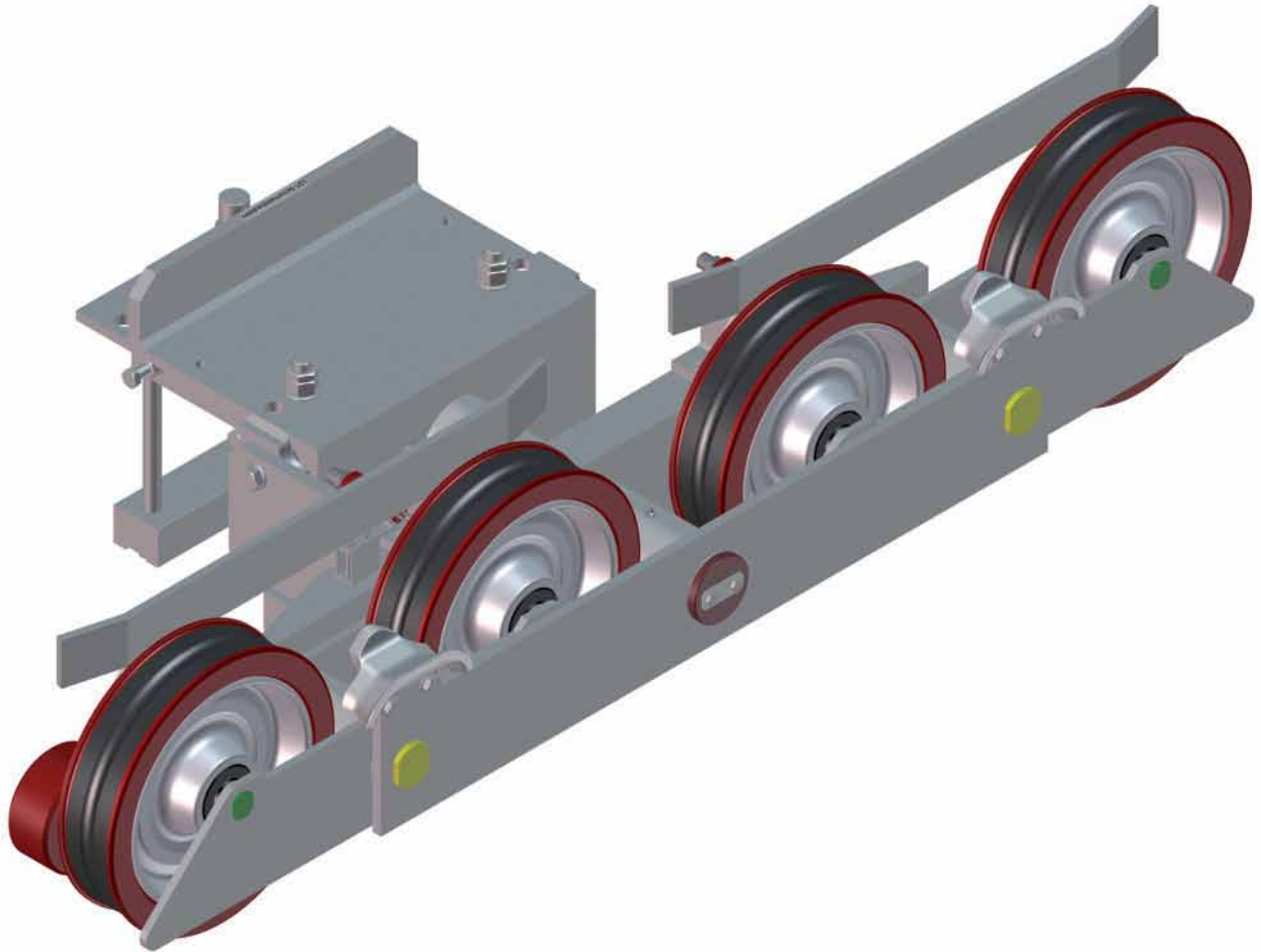
1 VEHICULE

4 seat vehicle: 4 seater chair WIND



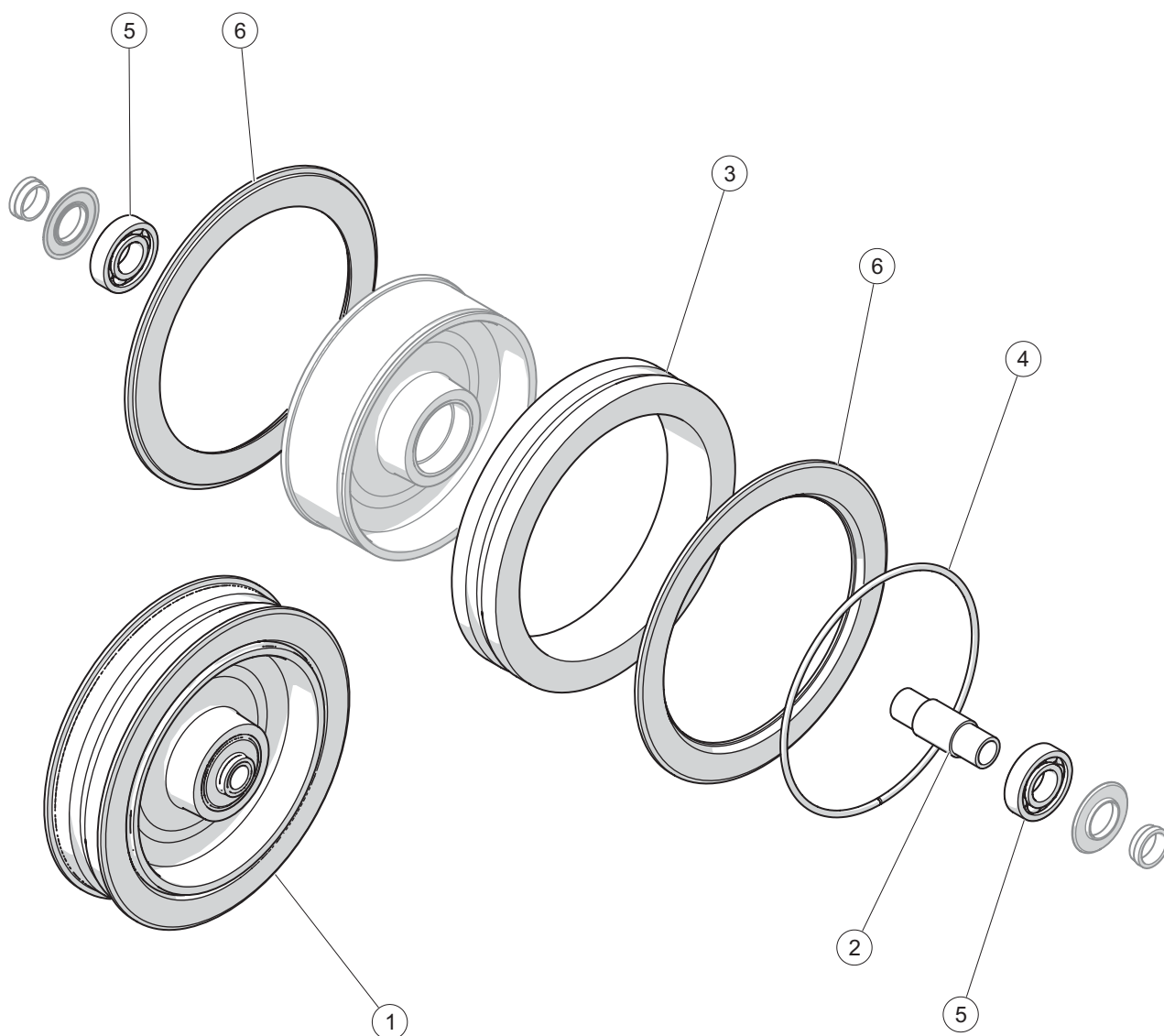
Marker	Cat. no	Designation	Quantity
①	LST-038683	4 seater chair WIND	1
②	LST-033118	Arm rest	2
③	LST-034155	Seat	1
④	LST-034217	Foam	4
⑤	LST-034354	Foam fixation (right)	4
⑥	LST-034357	Foam fixation (left)	4
⑦	LST-036123	Safety bar with child protection	1
⑧	LST-000061	Protection	4

Marker	Cat. no	Designation	Quantity
⑨	LST-000065	Stopper	2
⑩	LST-034378	Side part	1
⑪	LST-034399	Side part	1
⑫	LST-036124	Child protection	4
⑬	LST-036314	Stopper	2
⑭	LST-038685	Backrest	1
⑮	LST-038686	Foam	1
⑯	LST-051129	Foam fixation (right)	1
⑰	LST-051132	Foam fixation (left)	1



2LINE

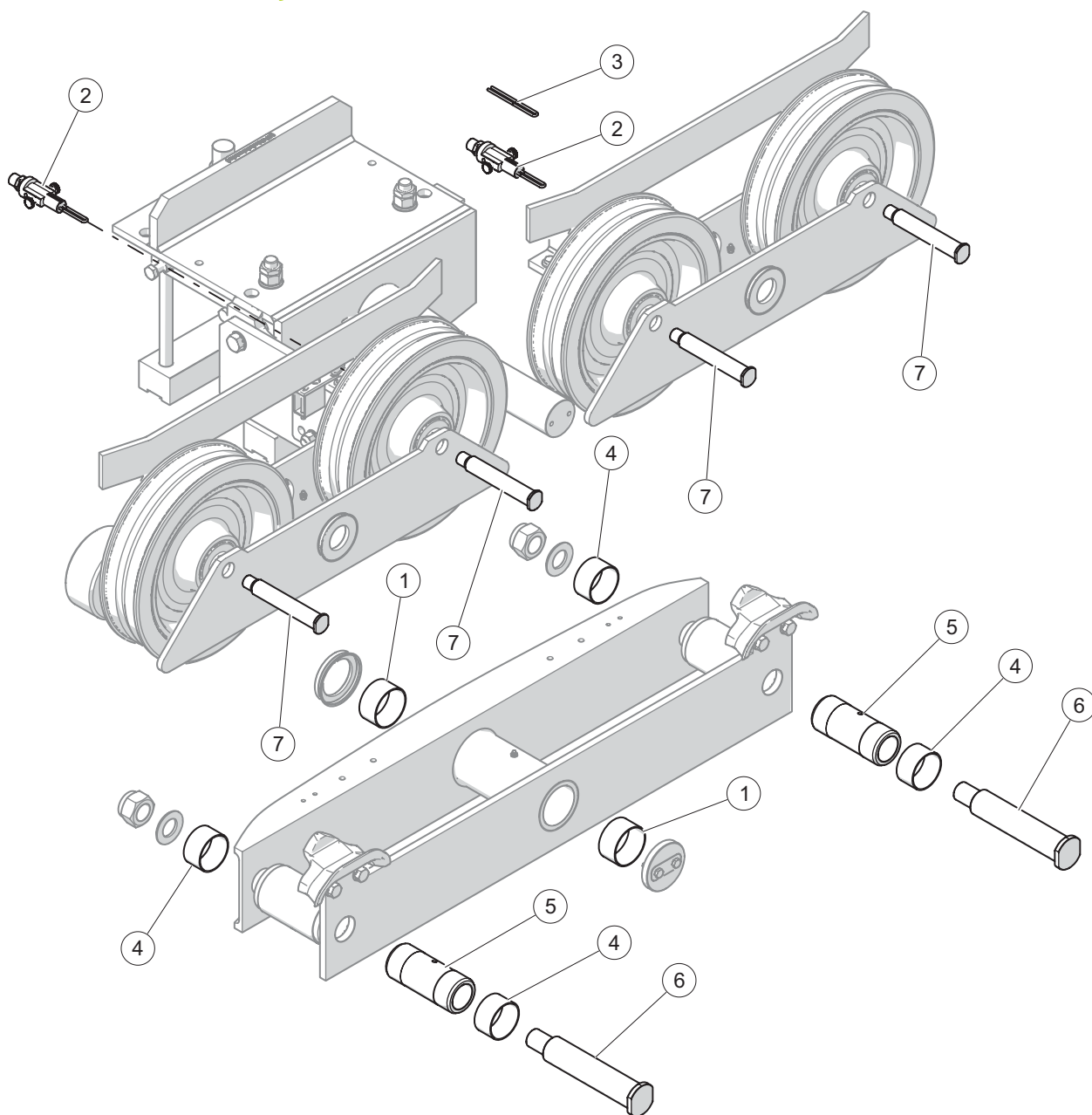
Wheel



Marker	Cat. no	Designation	Quantity
①-00	LST-011016	Wheel for Ø38 rope*	1
①-01	LST-010315	Wheel for Ø42 rope*	1
②	LST-010247	Distance washer	1
③-00	LST-017171	Rubber ring for Ø38 rope* 1	

*Other diameter on demand: Ø36 to 45 mm.

Marker	Cat. no	Designation	Quantity
③-01	LST-017174	Rubber ring for Ø42 rope* 1	
④	LST-010429	Circlip	1
⑤	STD-000817	Bearing	2
⑥	LST-011018	Dust cover	2



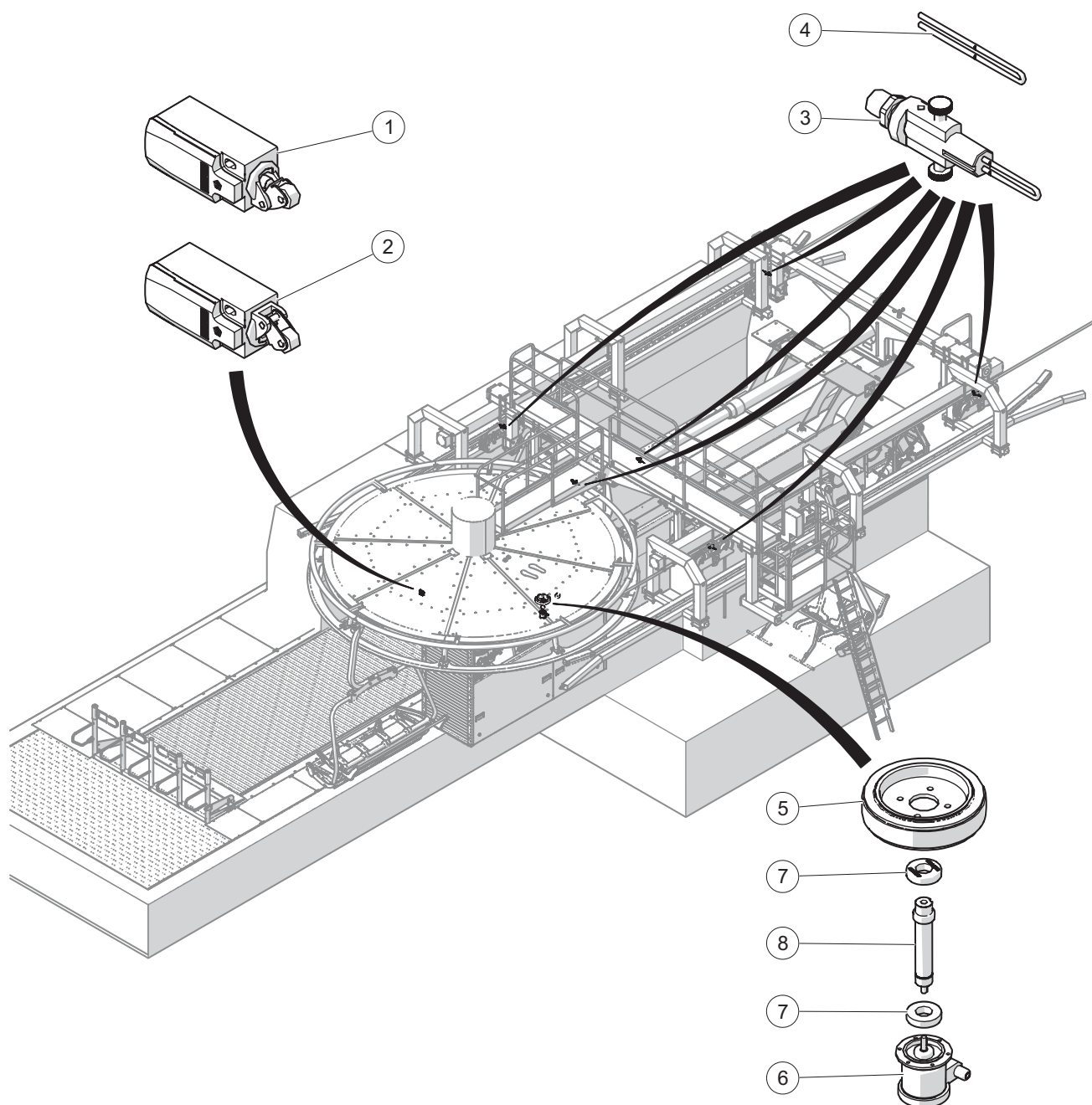
Marker	Cat. no	Designation	Quantity
①	LST-010241	Bearing sleeve	2
②	LST-004417	Break fork switch	1
③-00	LST-000533	Break fork 122 mm	1
③-01	LST-020855	Break fork 200 mm	1

* Delivered without break fork.

Marker	Cat. no	Designation	Quantity
④	LST-010237	Bearing sleeve	4
⑤	LST-010206	Distance washer	2
⑥	LST-010193	Axle	2
⑦	LST-010194	Axle	4

3 SENSOR

Drive station



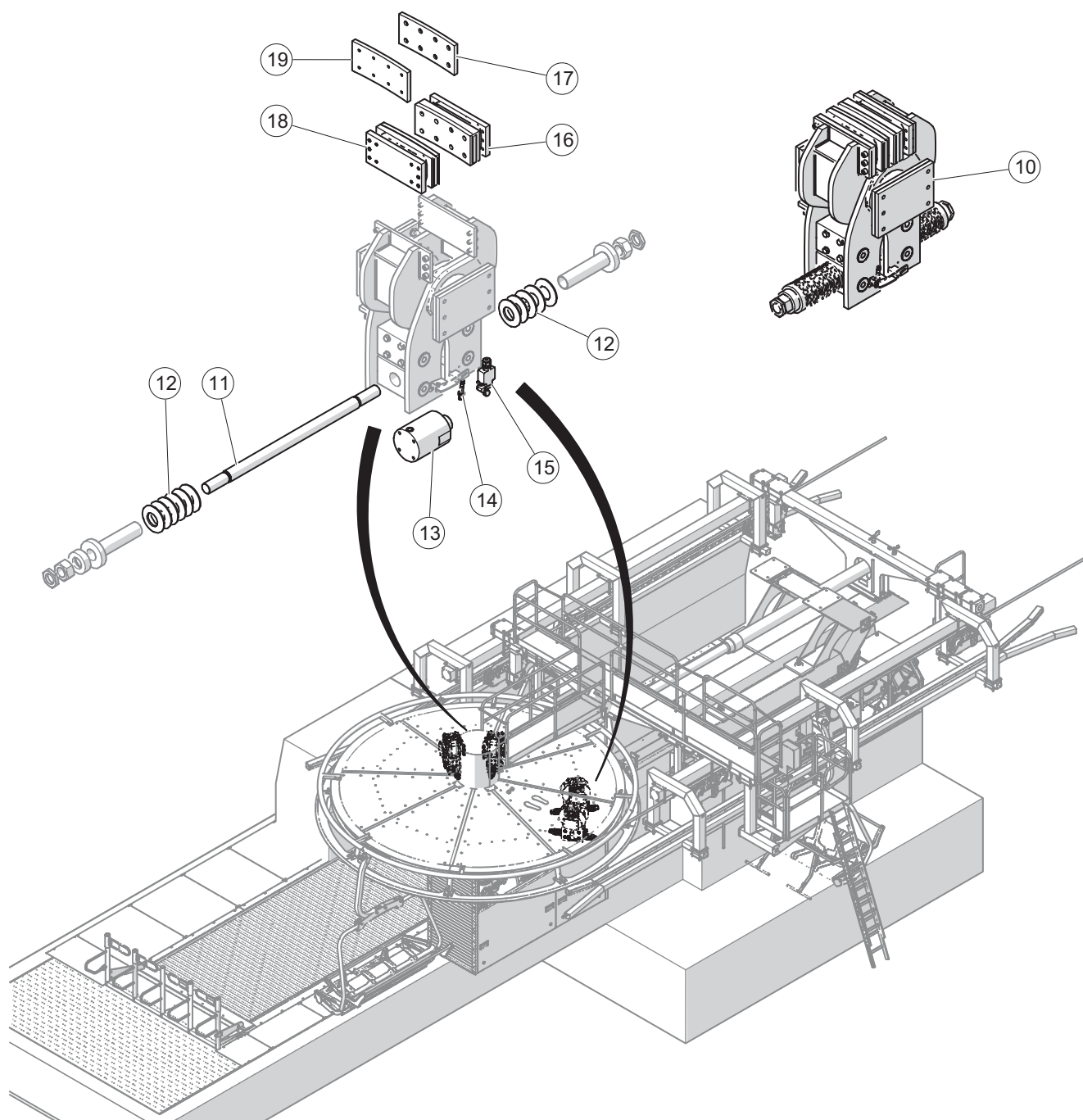
Marker	Cat. no	Designation	Quantity
①	LST-019873	High position sensor	1
②	LST-019876	Low position sensor	1
③	LST-004417	Break fork switch*	1
④	LST-000533	Break fork 122 mm	1

* Delivered without break fork.

Marker	Cat. no	Designation	Quantity
⑤	LST-004948	Wheel	1
⑥	LST-005008	Encoder	1
⑦	LST-004925	Bearing	1
⑧	LST-004924	Axle	1

3 SENSOR

Drive station

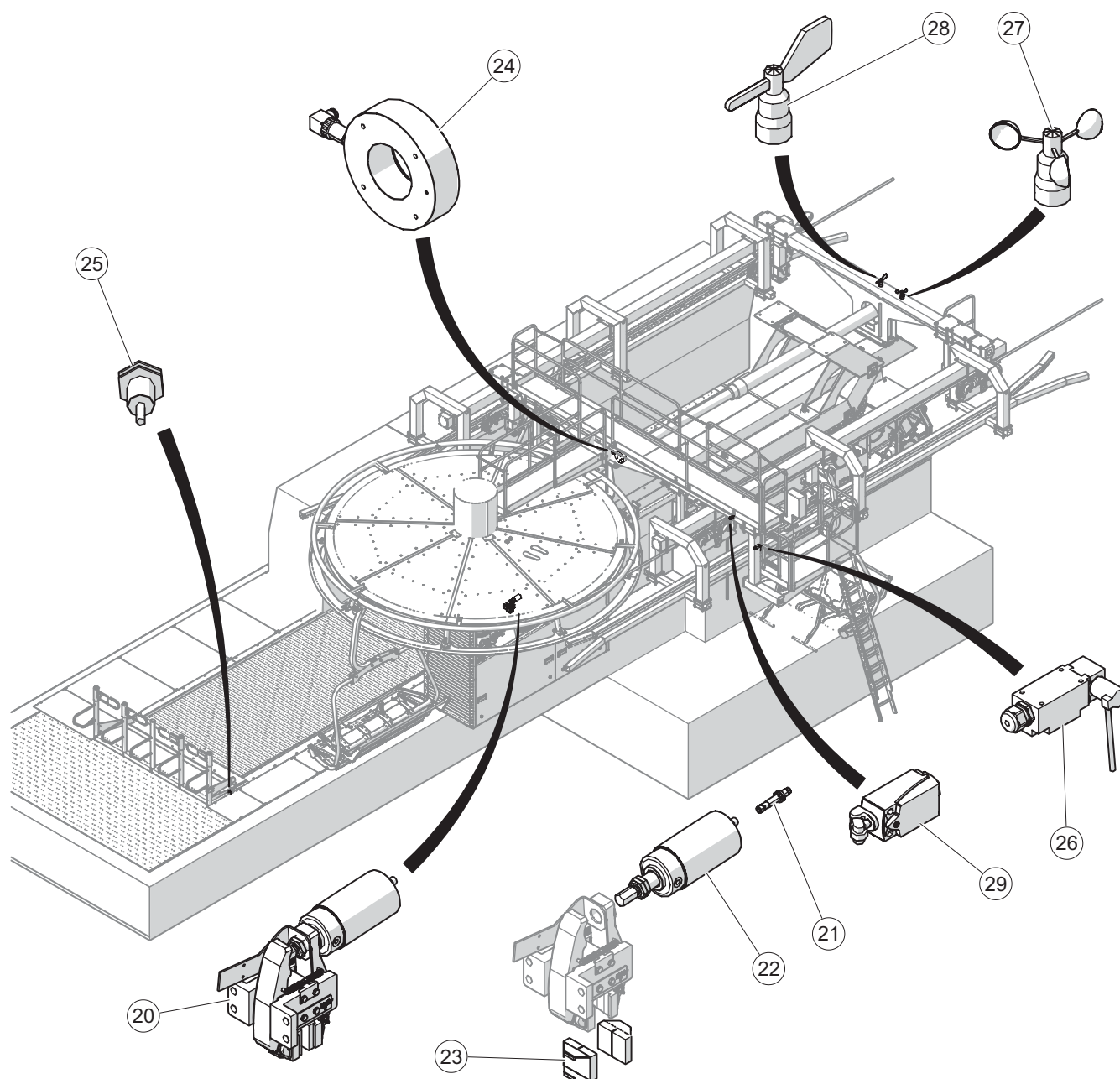


Marker	Cat. no	Designation	Quantity
⑩	LST-038883	Emergency brake	1
⑪	LST-006040	Axle	1
⑫	LST-004598	Spring washer	1
⑬	LST-006057	Jack	1
⑭	LST-038875	Inductive sensor	1
⑮	LST-036798	Mechanical sensor	1

Marker	Cat. no	Designation	Quantity
⑯	LST-006078	Brake pad set ext.	1
⑰	LST-006056	Brake pad ext.	1
⑱	LST-006077	Brake pad set int.	1
⑲	LST-006052	Brake pad int.	1

3 SENSOR

Drive station

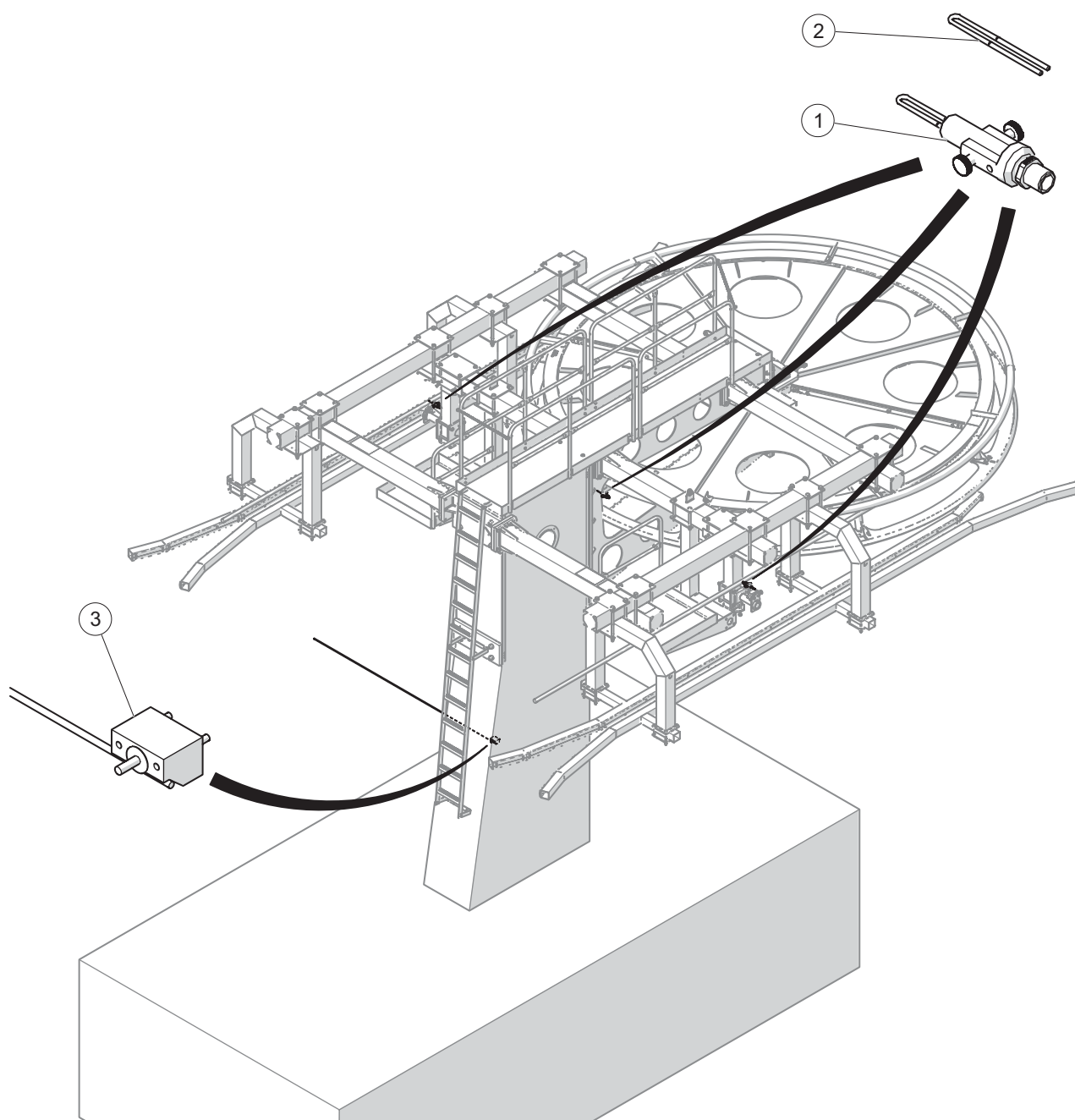


Marker	Cat. no	Designation	Quantity
20	225910	Service brake	1
21	LST-038875	Sensor	1
22	LST-005475	Jack	1
23	LST-005472	Brake pad (x2)	1
24	LST-053106	Force sensor	1

Marker	Cat. no	Designation	Quantity
25	LST-035606	Inductive sensor	1
26	LST-005322	Non landing sensor	1
27	224011	Anemometer	1
28	224012	Weathercock	1
29	225889	Grounded sensor	1

3 SENSOR

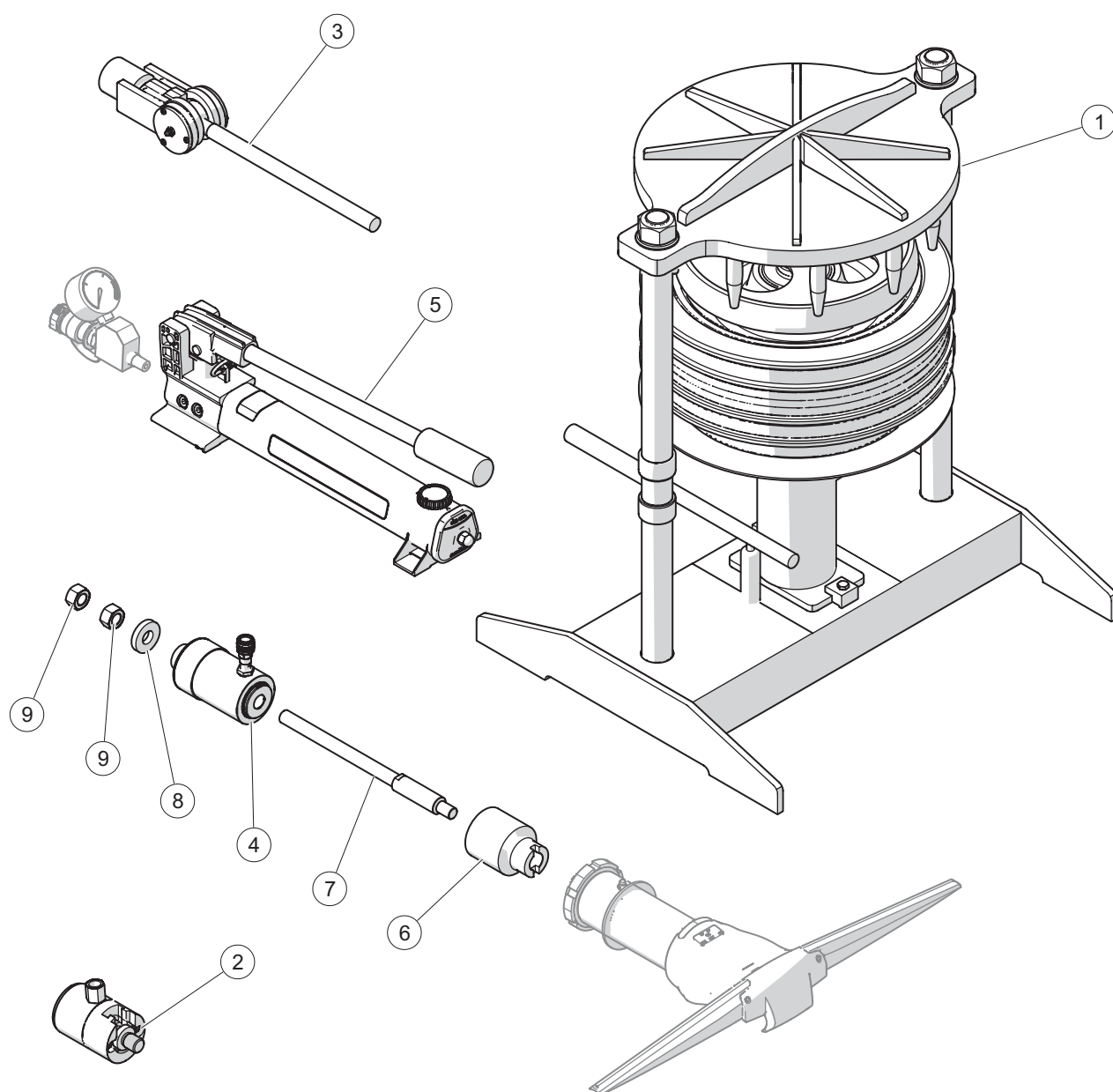
Return station



Marker	Cat. no	Designation	Quantity
①	LST-004417	Break fork switch*	1
②	LST-000533	Break fork 122mm	1

* Delivered without break fork.

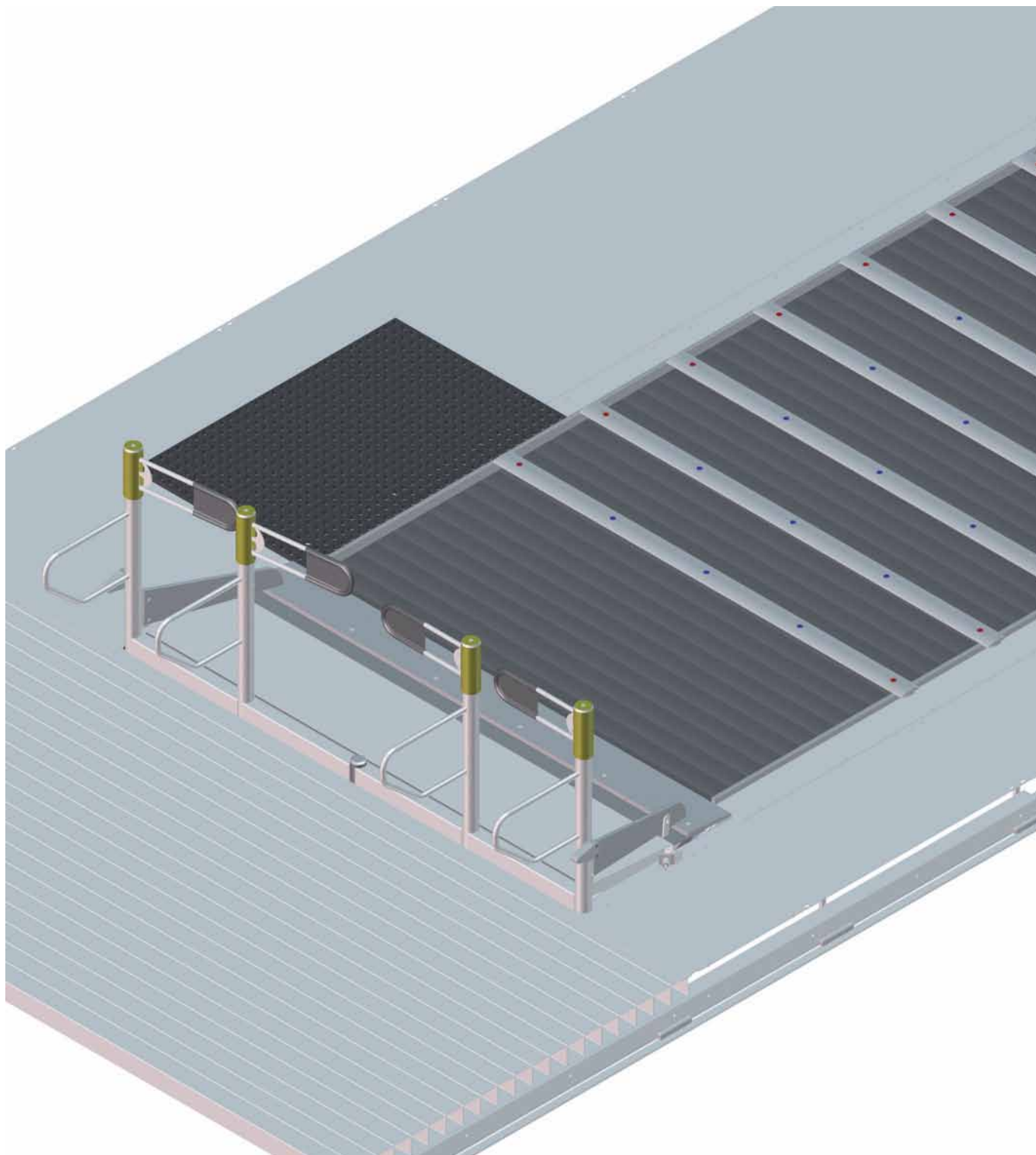
Marker	Cat. no	Designation	Quantity
③	LST-027755	Non landing sensor (SG Type)	1



Marker	Cat. no	Designation	Quantity
①	LST-011007	Hydraulic press	1
②	LST-027265	Jack for FK2 displacement1	
③	LST-028611	FK1 grip displacement	1
④	222975	FK2B grip assembly and displacement	1
⑤	225735	Displacement pump	1

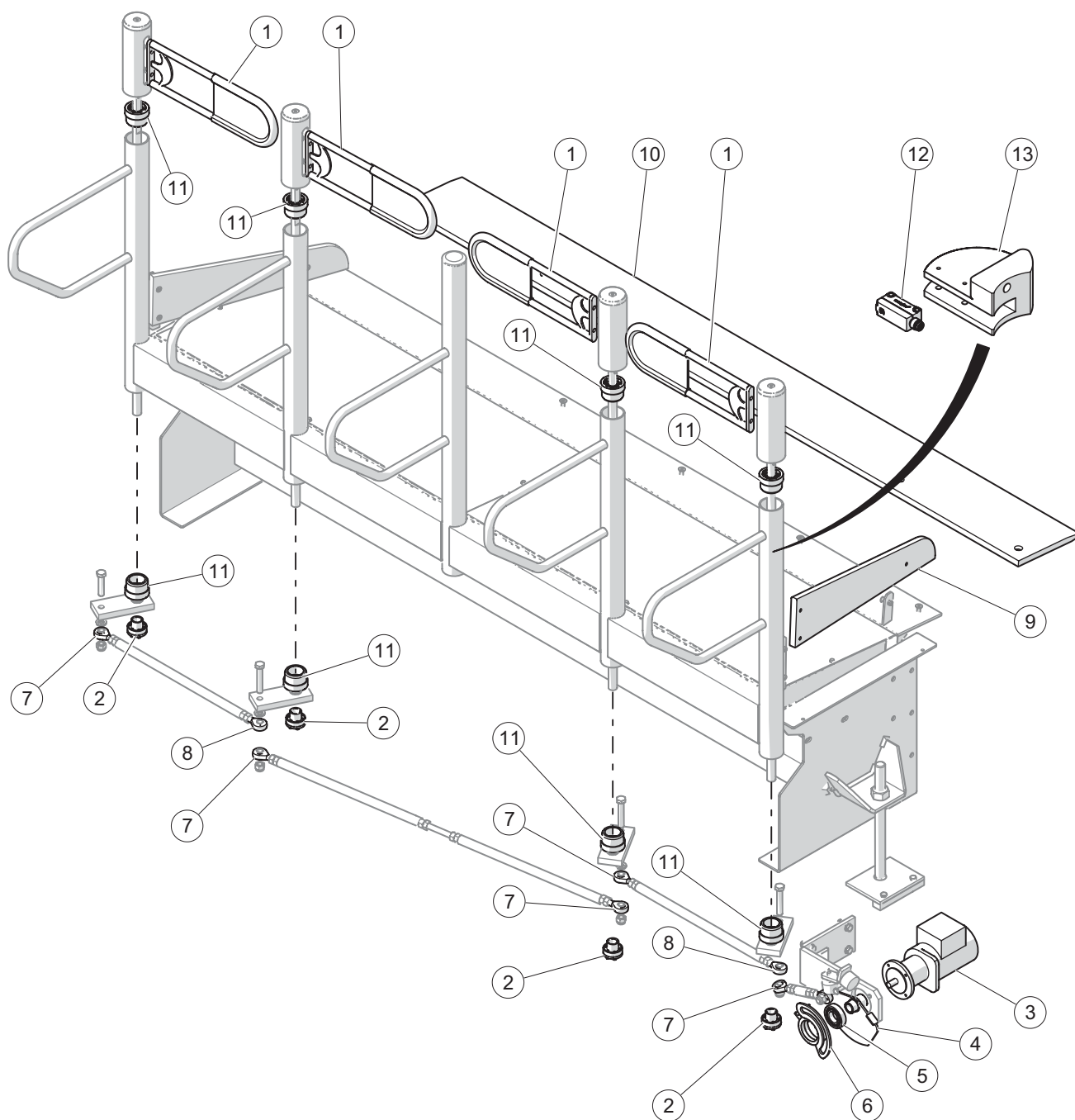
Marker	Cat. no	Designation	Quantity
⑥	212541	FK2B displacement support	1
⑦	212542	FK2B displacement tool axle	1
⑧	221459	Washer	1
⑨	6121339	Nut	1

5 LOADING BELT



5 LOADING BELT

4 seater loading gate

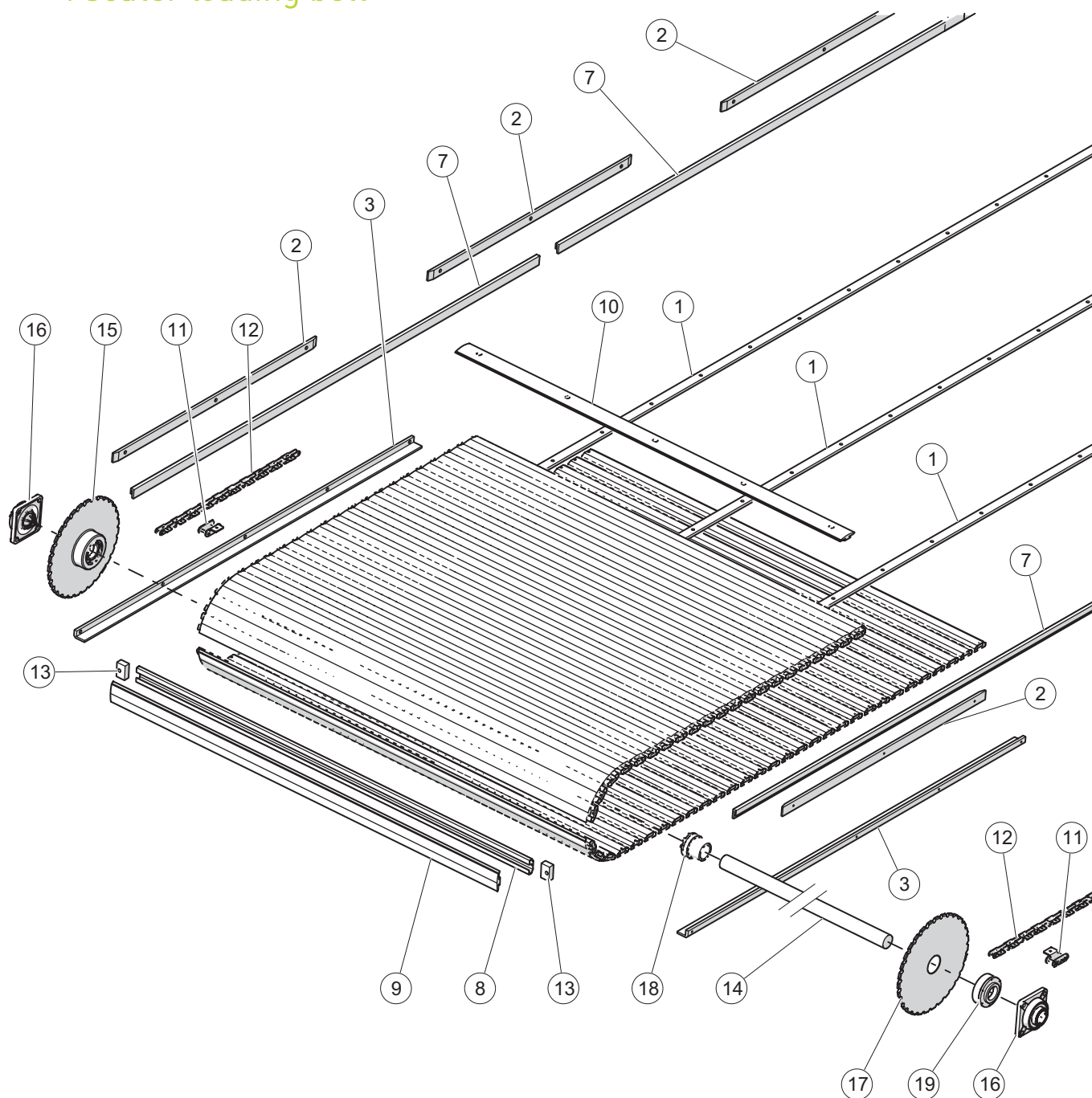


Marker	Cat. no	Designation	Quantity
①	LST-033776	Rubber wing	1
②	LST-033795	Clamping bush	1
③	LST-033883	Gear motor	1
④-00	LST-033746	Opening frame right	1
④-01	LST-035967	Opening frame left	1
⑤	STD-001611	Ball bearing	1
⑥-00	LST-033769	Motor support right	1
⑥-01	LST-035968	Motor support left	1

Marker	Cat. no	Designation	Quantity
⑦	LST-033862	Ball joint left	1
⑧	LST-033857	Ball joint right	1
⑨	LST-033895	Lateral plastic	1
⑩	LST-034111	Loading plastic	1
⑪	STD-002135	Ball bearing	1
⑫	LST-051701	Counting sensor	1
⑬	LST-036515	Counting sensor support	1

5 LOADING BELT

4 seater loading belt



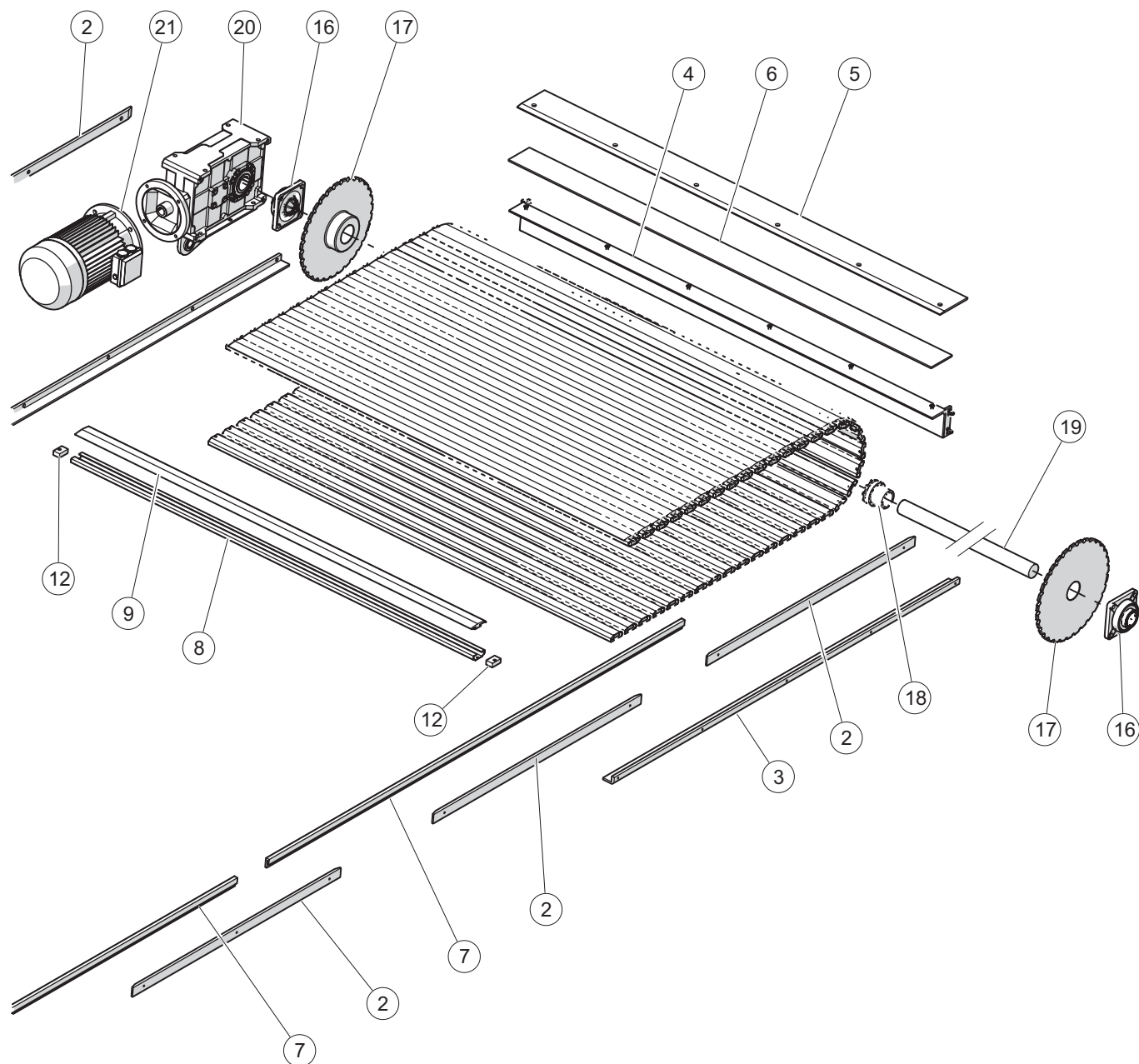
Marker	Cat. no	Designation	Quantity
①	LST-034313	Sliding plate 6000 mm	1
②	LST-034250	Sliding plate 1500 mm	1
③	LST-034254	Sliding plastic angle 2500 mm	1
⑦	LST-034300	Side cover 3000 mm	1
⑧	LST-033933	C-profile (steel frame)	1
⑨	LST-033939	Rubber lath	1
⑩	LST-037109	Plastic lath	1
⑪	LST-034032	Chain lock	1

Marker	Cat. no	Designation	Quantity
⑫	LST-034035	Chain*	1
⑬	LST-034336	Spacer	1
⑭	LST-034166	Return shaft	1
⑮	LST-034320	Chain wheel with ball bearing	1
⑯	LST-033999	Bearing	1
⑰	LST-034154	Chain wheel	1
⑱	LST-034278	Clamping bush	1

* 1U = 1 m

5 LOADING BELT

4 seater loading belt



Marker	Cat. no	Designation	Quantity
②	LST-034250	Sliding plate 1500mm	1
③	LST-034254	Sliding plastic angle 2500 mm	1
④	LST-034197	Complete exit frame	1
⑤	LST-034292	Exit plastic	1
⑥	LST-034294	Rubber lip	1
⑦	LST-034300	Side cover 3000 mm	1
⑧	LST-033933	C-profile (steel frame)	1
⑨	LST-033939	Rubber lath	1

Marker	Cat. no	Designation	Quantity
⑫	LST-034336	Spacer	1
⑯	LST-033999	Bearing	1
⑰	LST-034154	Chain wheel	1
⑱	LST-034278	Clamping bush	1
⑲	LST-034169	Drive shaft	1
⑳	LST-033110	Gearbox TC180 I40	1
㉑	LST-041938	Motor 11KW	1

INNOVATIVE SOLUTIONS FOR ROPEWAY TRANSPORTATION //




MND ROPEWAYS

www.mnd.com